

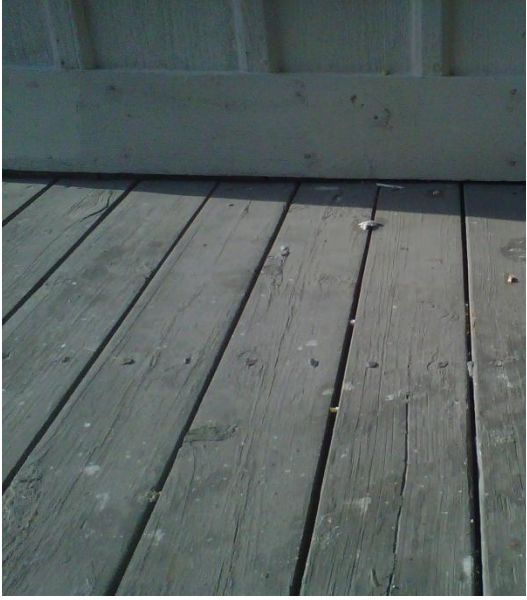
**JUST A FEW EXAMPLES WHAT PHOTOGRAPHERS LEAVE BEHIND  
FROM THEIR CAKE SMASH PHOTO SESSIONS**

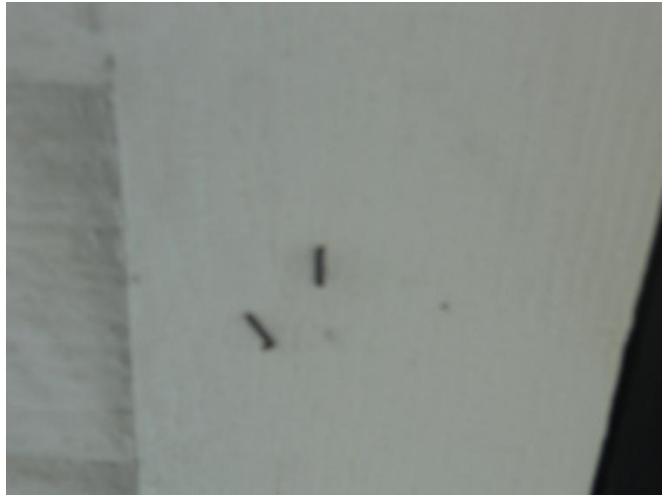
Cake icing, silly string, and tape on buildings have removed paint. We had 75 staples on one building from photographers stapling their backdrops/props to the exterior walls. Latest has been someone putting push pins in the new and recently painted steps of another house leaving 11 holes with the imprints of the push pins.





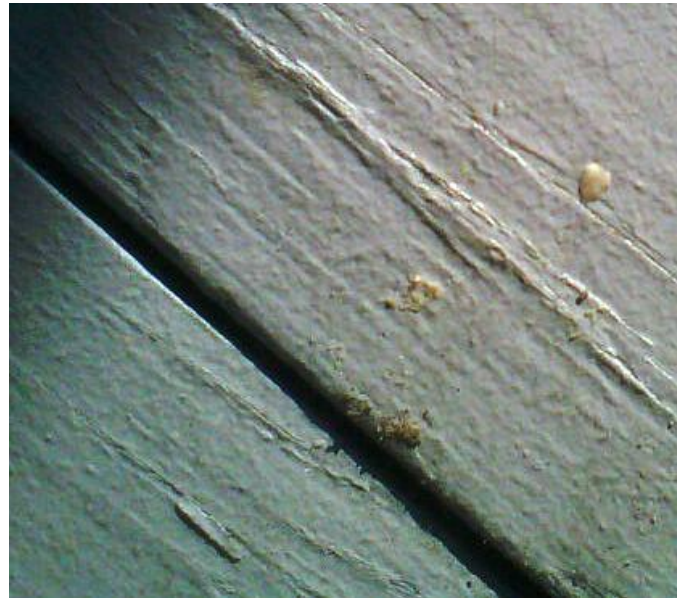








Recent Cake Smash – August 28, 2013  
Porch and new steps painted first of August 2013 and already stained with cake  
icing and holes in steps from push pins





A few of the push pin holes in steps



Push pins left on porch near steps



More push pin holes in steps





**Damage done by push pins**